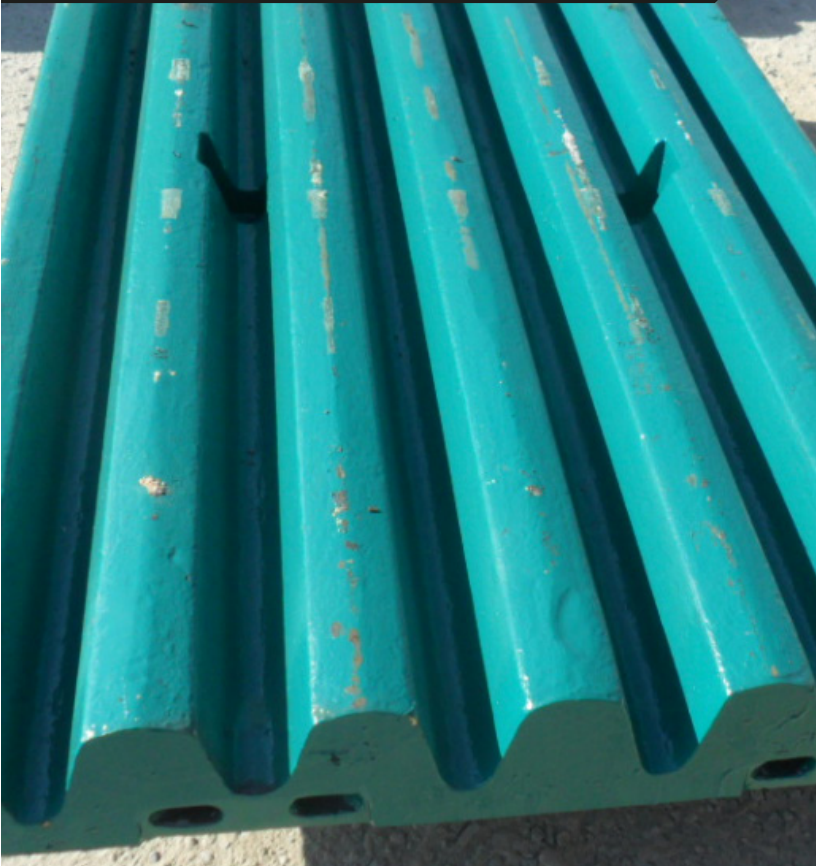


# Metso:Outotec

Crusher wears

## Coarse corrugated jaws



Application

Suitable for applications with a lot of fines and feed that tend to break into slabs. It is also optimal when there is no scalper, or scalping is not efficient.

Improved crusher performance, safety and lower cost per ton. Our jaw crusher wear parts with corrugated profile allow for improved material flow, product quality and better wear life.

Keeping your whole crushing circuit operation up and running requires optimal crusher wear parts that ensure maximum performance. With our 100 years of experience and knowledge of crushers and different mining and aggregates crushing applications, we know how crusher wear parts fit and function within a crusher. Our jaw crusher wear parts are designed to the same specifications and standards as our Nordberg® C Series™ jaw crushers, ensuring equipment compatibility for reliable & safe operation.

#### Improved material flow and better wear life

Metso Outotec coarse corrugated jaw plates provide improved material flow, product quality and better wear life. Jaw plates with coarse corrugated profile have increased wear material and bigger gaps between the teeth, which increases the surface area to let the fines flow through. This design prevents accelerated wearing of the wear part and reduces the risk for packing situations.

This leads to improved material flow, process up-time and performance of the primary crushing stage. When primary crushing is working efficiently, it's possible to achieve more tonnage through the whole crushing circuit.

#### Applications

Coarse corrugated jaw profile is optimal for production when there is no scalper, or scalping is not efficient. This is because the jaw plate design allows for fine material to pass easier through the chamber.

Jaw profile design is also suitable for feed that tends to break into slabs. Features such as the uneven crushing surface of the corrugated jaw plate design are built to reduce the amount of slabby material in the crusher discharge. Therefore, there will be less blockages in conveyors and secondary crushers.

#### Safer and more efficient maintenance

Coarse corrugated jaw plates are available with lifting tools to make maintenance of your jaw crusher safer and more efficient. By using right lifting tools, you improve the wear lifetime, and avoid the risk of damaging the equipment. As a result, your maintenance times are shortened and crusher downtime is reduced.

### Benefits

- Improved material flow due to more surface area for fines to flow
- Better wear life due to better fines removal and height of teeth, leading to improved process up-time
- Improved product quality due to reduced slabby material
- More production compared to regular jaw plate

## Crusher wears

# Profile characteristics

Improve your crusher performance and enhance your tooth profile today. What could your operation look like with better material flow, wear life and product quality? Find out with Metso Outotec.

### Improved material flow:

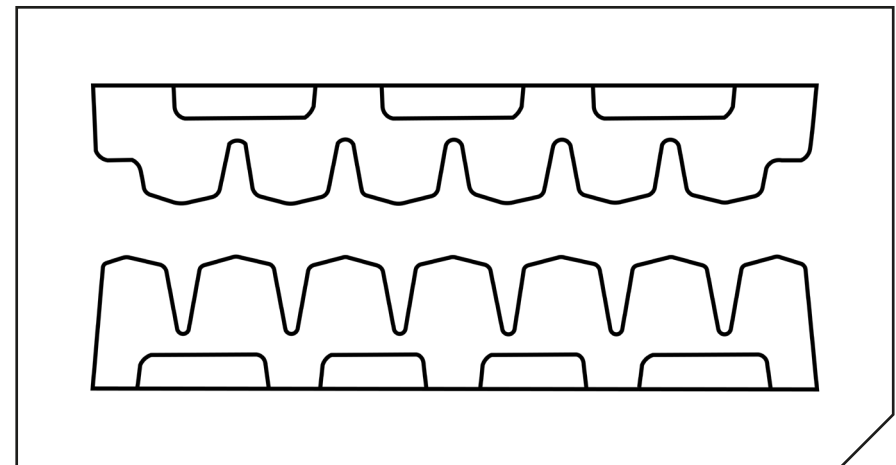
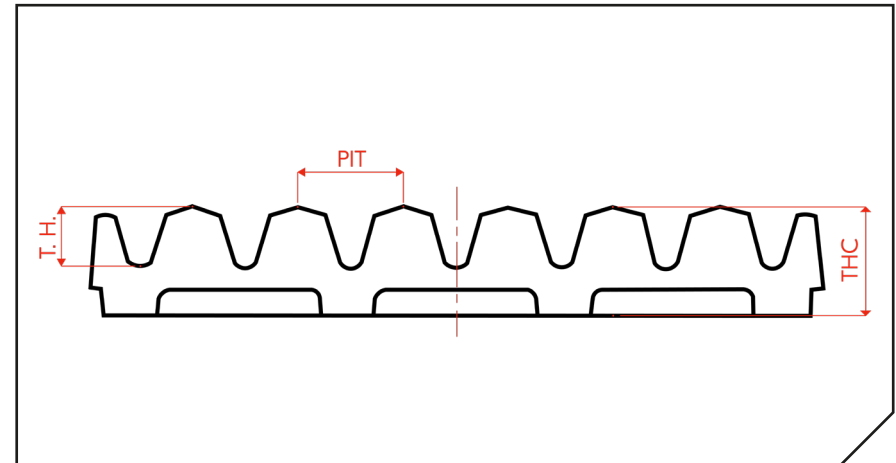
- More surface area to let the fines flow through
- Improved nip-angle because teeth are taller

### Better wear life:

- Less wearing due to better fines removal
- Height of teeth - manganese is put to where it counts

### Improved product quality

- Features such as the uneven crushing surface of the corrugated jaw plate reduce the amount of of slabby material in the crusher discharge



Read more at  
[mogroup.com/jaw-crusher-parts](http://mogroup.com/jaw-crusher-parts)